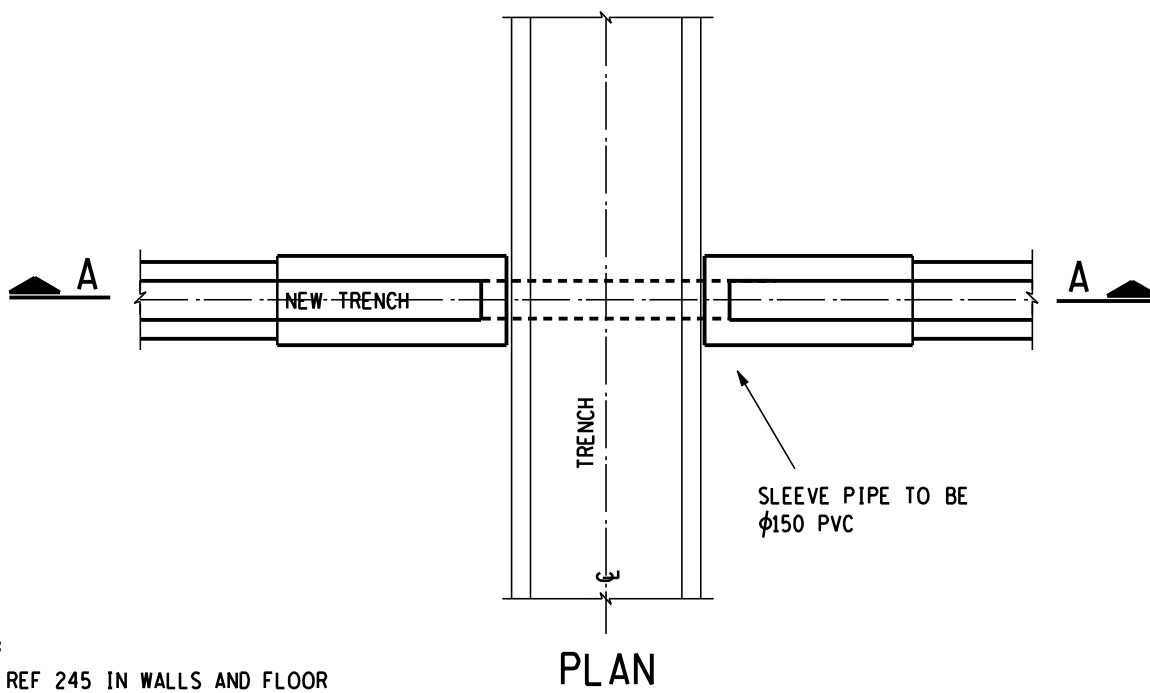
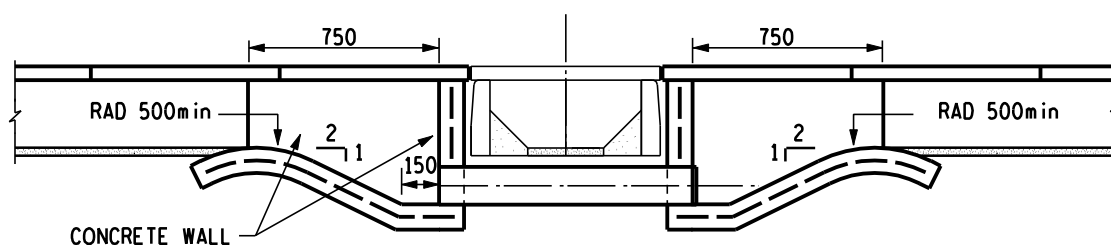


FOR TRENCH SECTIONS SEE DETAIL 15 AND 15c
FOR TRENCH COVERS SEE DETAIL 17A.

ARRANGEMENT OF TRENCH COVERS



NOTE:
MESH REF 245 IN WALLS AND FLOOR
WALLS 100mm THICK
FLOOR 100mm THICK



SECTION A - A

CABLE TRENCH 300mm WIDE

CROSSING DETAIL WITH SLEEVE

TRANSMISSION
SUBSTATION
TECHNOLOGY
DEPARTMENT



ESKOM

DRAWN
GETEKEN

DJC.S

27.01
2000

CHKD
NAGES

DB.N.

27.01
2000

AUTH
MAS

REV

0

DATE
DATUM

H V YARD CIVIL WORK
STANDARD DETAILS

0.54/390

SHEET 29c

DRG.TEK
REGISTR

A4L